

MARVIS VIRTUAL NETWORK ASSISTANT (VNA) FOR DATA CENTER DATASHEET

Product overview

[Marvis Virtual Network Assistant \(VNA\) for Data Center](#) is the digital network expert that supports your data center network operations team, providing proactive and prescriptive data center actions and simplifying operations tasks via the Marvis conversational interface.

Marvis VNA for Data Center is part of the Apstra Cloud Services product suite for data center AI operations (AIOps). Combining the power of AIOps and intent-based networking creates an unbeatable operational experience for data center networking teams.

Marvis VNA for Data Center works in conjunction with Juniper Apstra, the industry-leading multivendor intent-based networking platform, to provide proactive and prescriptive data center actions. It also simplifies operations tasks via the Marvis conversational interface, powered by generative AI. By combining the power of AI and intent-based networking, Marvis VNA and Apstra enable data center network operations teams to save time and money and increase network uptime by accelerating problem resolution.

Marvis Actions

Marvis Actions drives operational simplicity and transforms IT from reactive troubleshooting to proactive remediation. It offers a “morning cup of coffee” view, that delivers visibility into high-impact network issues at an organizational level so that administrators know exactly what they need to prioritize and focus on.

Marvis VNA for Data Center adds a data center component to the top-level Marvis Actions view, allowing end-to-end visibility of anomalies across the entire enterprise network, from users in campus and branch networks to applications in the data center.

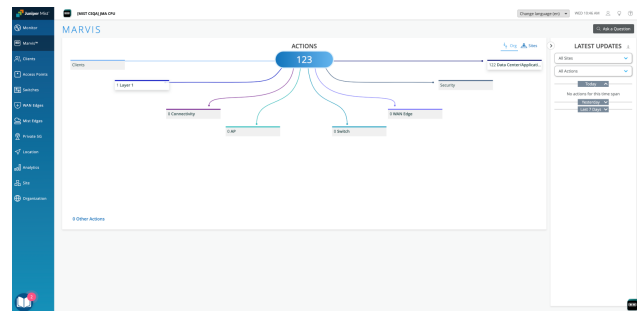


Figure 1: Marvis Actions dashboard, including data center

Marvis VNA for Data Center leverages Apstra’s rich telemetry data to provide a high-level view of data center network health on the Marvis Actions dashboard. Marvis highlights anomalies and recommended actions in data center switching devices, virtual infrastructure, physical and logical connectivity, and security. AI-Native insights lead to faster root cause identification and issue resolution. If more detailed information is required, a single click opens the relevant screen in the Apstra user interface where you can continue troubleshooting.

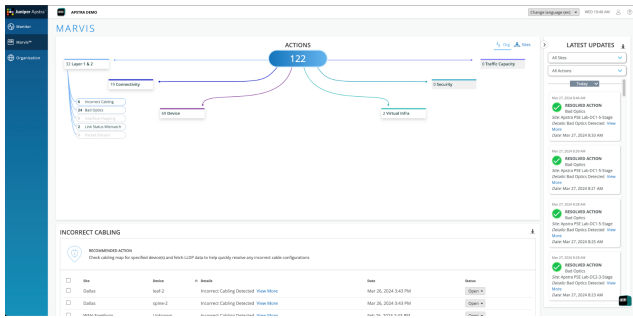


Figure 2: Marvis VNA for Data Center actions dashboard

From the data center dashboard, you can select a category to see more detail about a specific metric, such as incorrect cabling or MTU issues. Table 1 shows the full list of data center action categories and metrics.

Table 1: Marvis VNA for Data Center action categories and metrics

Layer 1 & 2	
Incorrect cabling	
Bad optics	
Interface flapping	
Link status mismatch	
Packet discard	
Connectivity	
Missing routes	
BGP mismatch	
LAG imbalance	
MLAG imbalance	
BGP flapping	
EVPN host flapping	
Type-3 missing routes	
Type-5 missing routes	
VXLAN flow lists mismatch	
Device	
Config deviation	
Deployment status mismatch	
Resource health issues	
Environment health issues	
Virtual infrastructure	
Configuration mismatch	
Missing VLANs	
MTU issues	
Non-redundant hosts	
Security	
802.1x issues	
Traffic capacity	
Spine faults	
Critical services alerts	
Hot/cold interface warning	

Marvis Actions: Marvis VNA for Data Center Conversational Assistant

Marvis' Conversational Assistant uses advanced natural language processing (NLP) and Generative AI (GenAI) to understand user intent and goals and contextualize natural language inquiries to provide specific answers, whether you're troubleshooting operations or searching for data center documentation.

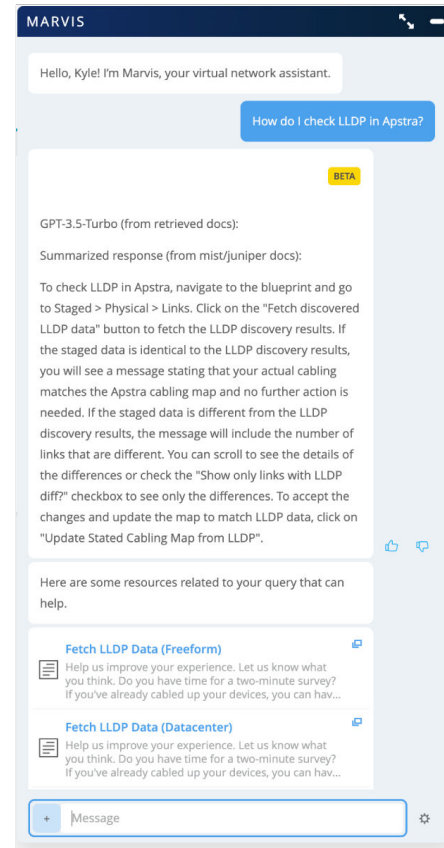


Figure 3: Marvis VNA for Data Center conversational interface

Multivendor compatibility

Because Apstra is inherently multivendor, working with both Juniper and many third-party switching devices, Marvis VNA for Data Center inherits those multivendor properties, enabling the same visibility of data center network health, anomaly detection, and recommended actions, regardless of which switching vendors are deployed.

Apstra integration

Marvis VNA for Data Center, part of the Apstra Cloud Services family, is a cloud-based application, while Apstra is premises-based. Connectivity between the two applications is enabled over a secure WebSocket connection that supports REST API requests, responses, and the streaming of telemetry data and alerts.

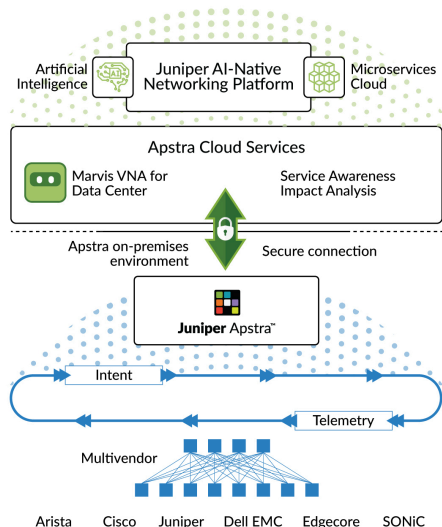


Figure 4: ACS–Apstra Integration

Marvis VNA for Data Center licensing

Marvis VNA for Data Center is included in the Apstra “Standard” license tier.

About Juniper Networks

Juniper Networks believes that connectivity is not the same as experiencing a great connection. Juniper's AI-Native Networking Platform is built from the ground up to leverage AI to deliver the best and most secure user experiences from the edge to the data center and cloud. Additional information can be found at Juniper Networks (www.juniper.net) or connect with Juniper on [X](#) (Twitter), [LinkedIn](#), and [Facebook](#).

Corporate and Sales Headquarters

Juniper Networks, Inc.
1133 Innovation Way
Sunnyvale, CA 94089 USA

Phone: 888.JUNIPER (888.586.4737)

or +1.408.745.2000

www.juniper.net

APAC and EMEA Headquarters

Juniper Networks International B.V.
Boeing Avenue 240 1119 PZ Schiphol-Rijk
Amsterdam, The Netherlands

Phone: +31.207.125.700

JUNIPER | Driven by
NETWORKS Experience™